

Tiger Frame, is it bent?





I don't have a scale but using PPT to draw these lines and getting a relative length the Driver (bottom) rear spring mount to Passenger side crossmember hole is 8.58 and opposite side is 8.69.

That's a 1.2% difference, this isn't precise but an estimation, photo angle will impact accuracy. But note that it is shorter in the direction of the suspected damage.

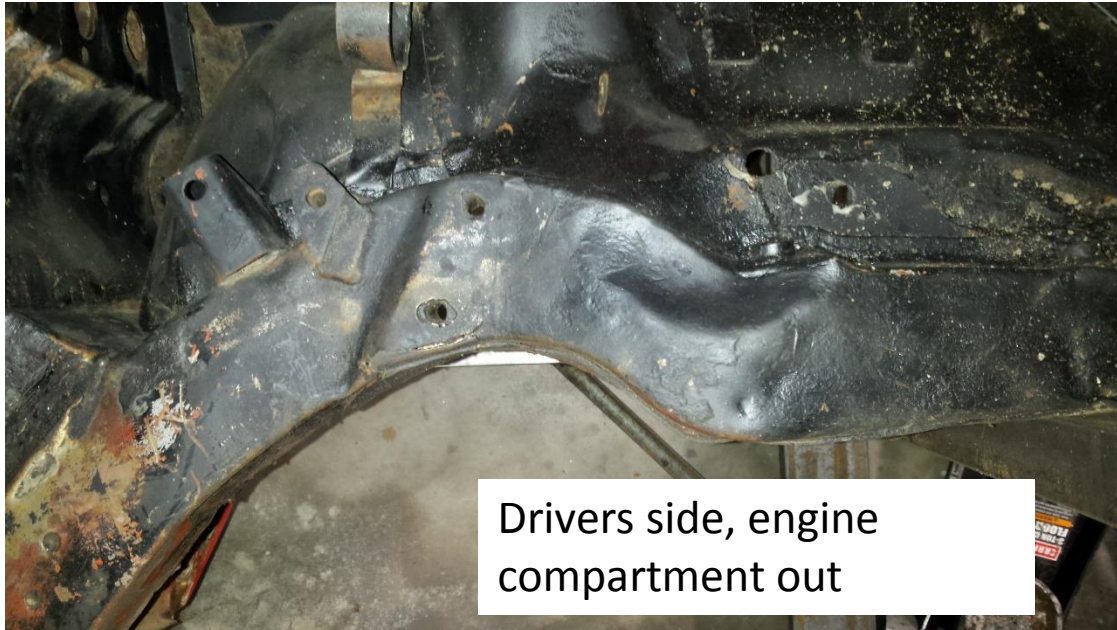


Kink and crease in passenger side frame rail looking at it bottom up, not there in drivers side

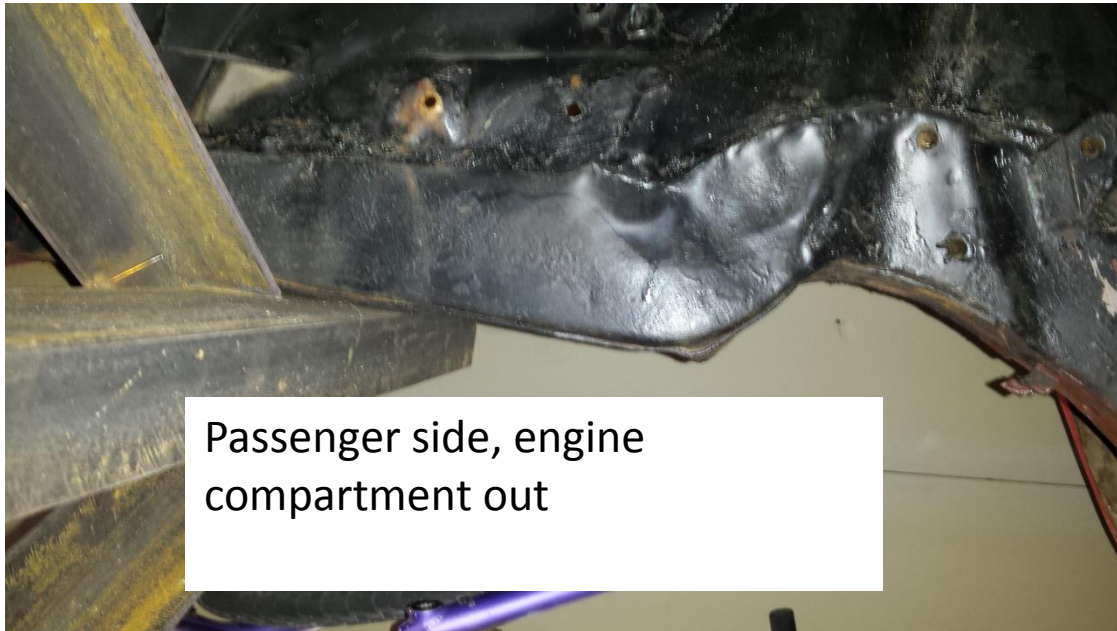
Car is standing on it's side and this is the underside of the engine compartment, front of the car to top of the image.



Another view of what I think is a compression that pushed the passenger side frame rail back and toward the center of the car



Drivers side, engine compartment out



Passenger side, engine compartment out

Top down view from Passenger side fender to put both frame pieces in perspective to each other





Engine compartment
down/out of passenger side



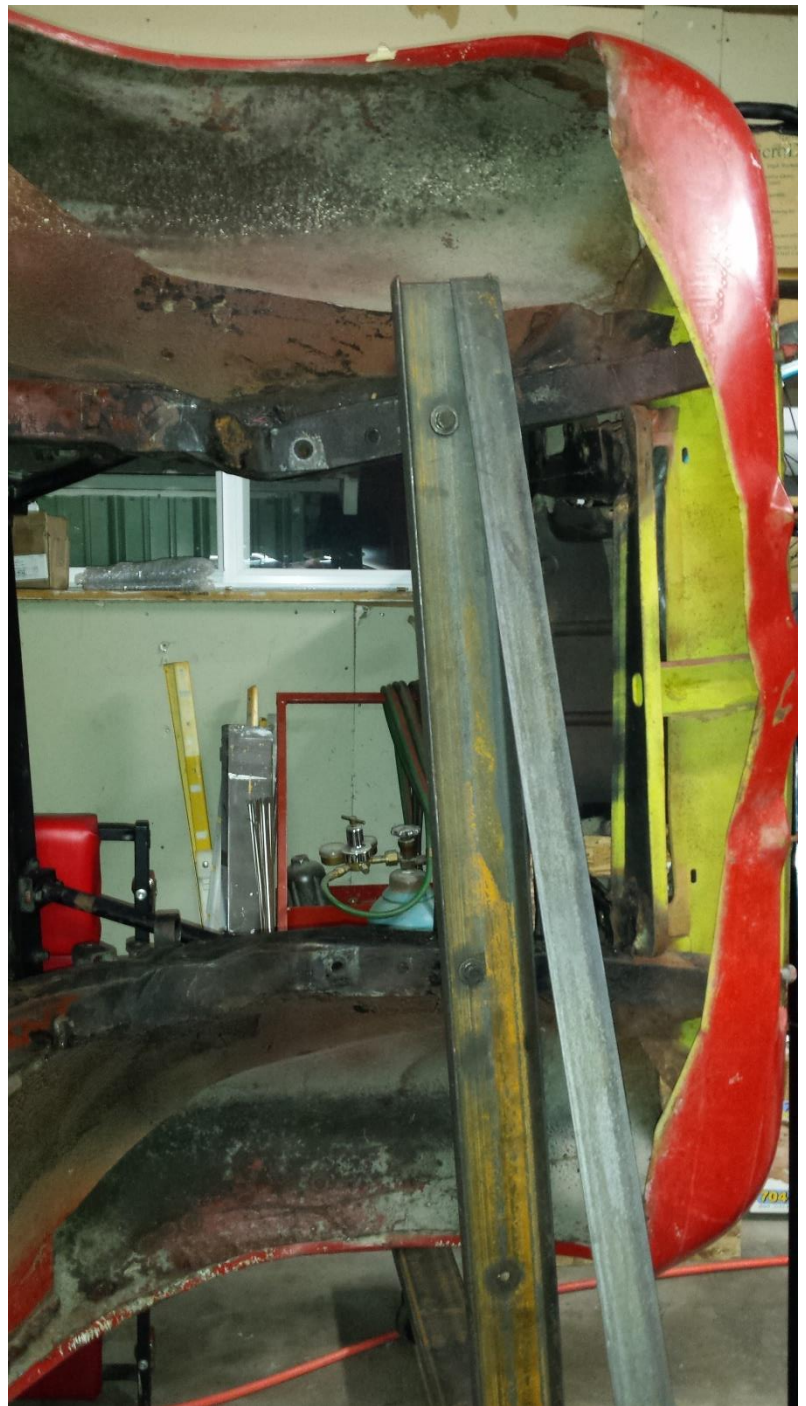
Engine compartment
down/out of drivers side



Close up passenger side fender in,
note that the frame makes almost a
90deg angle at the cross member
mount.



Drivers side
from fender
in.



Another question, look at the lower radiator surround from front and engine compartment, it's not bent. It is 2x wider on drivers side than it is on passenger side.

Is this normal or a repair. The hole in the center and the lip along the lower edge make it look like this is factory built?

