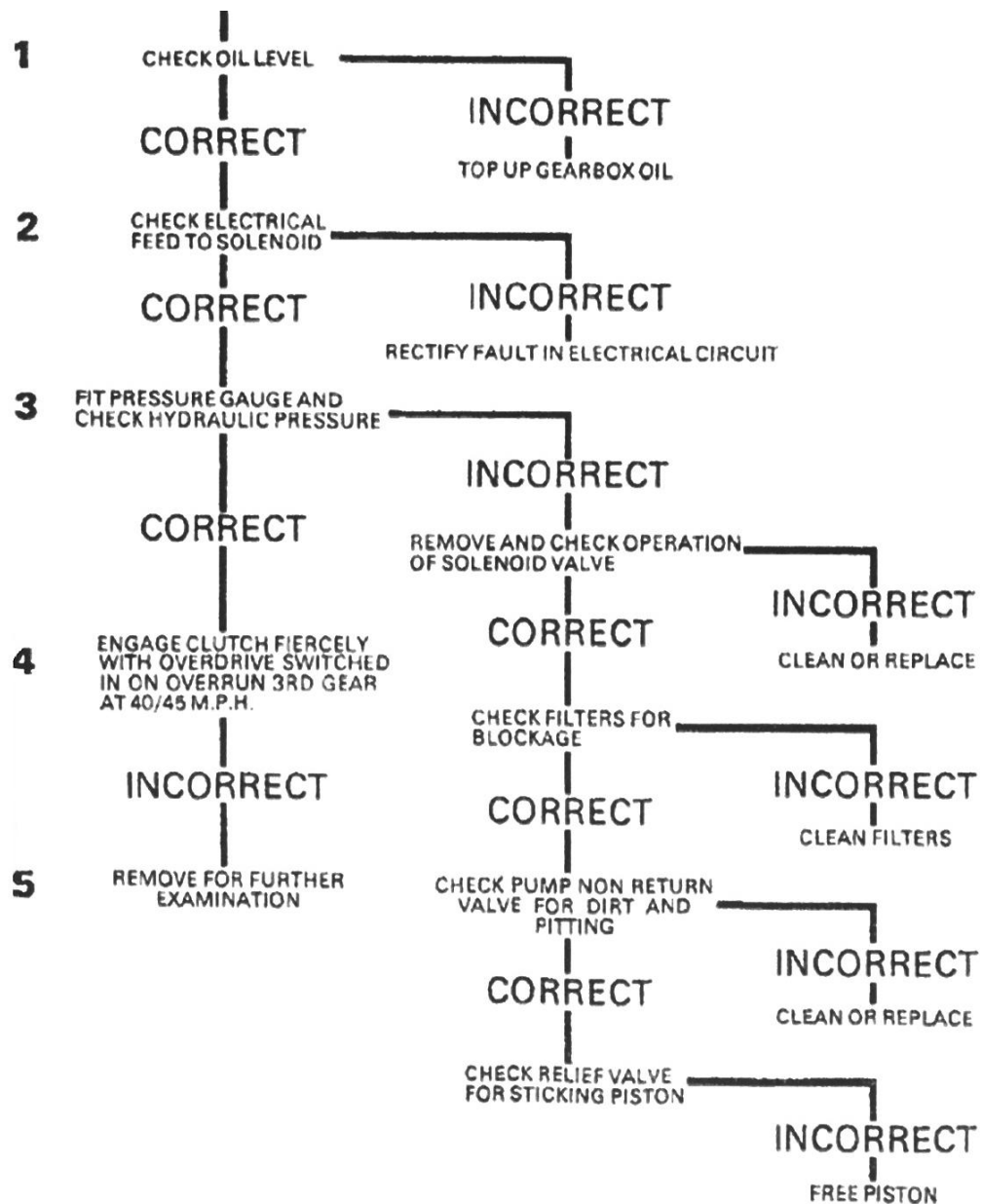


# Trouble Shooting the Laycock de Normaville Overdrive

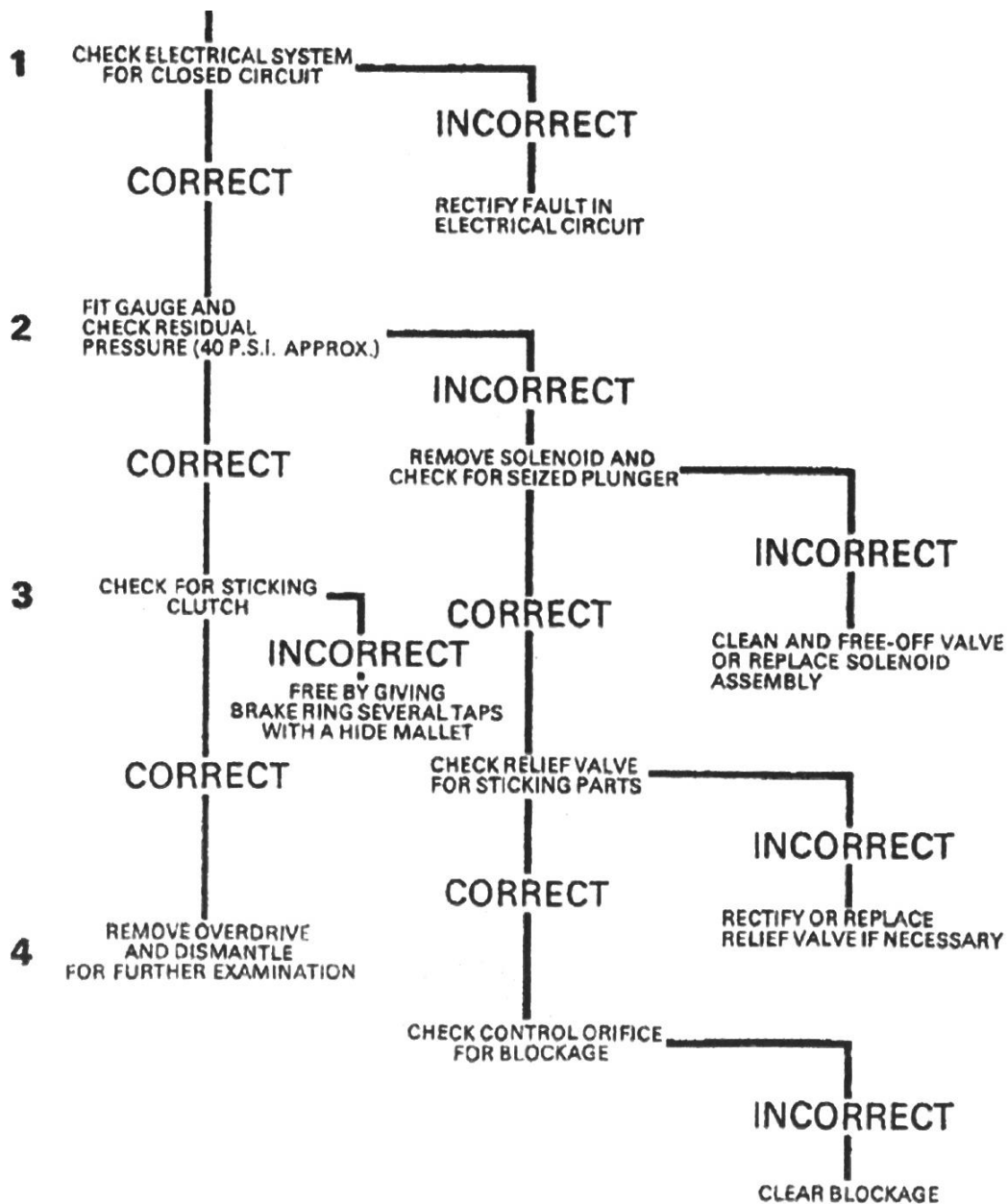
- A. Does Not Engage
- B. Does Not Disengage
- C. Slips When Engaging
- D. Disengagement Slow and / or Free-wheeling on Overrun

## A. Overdrive Does Not Engage

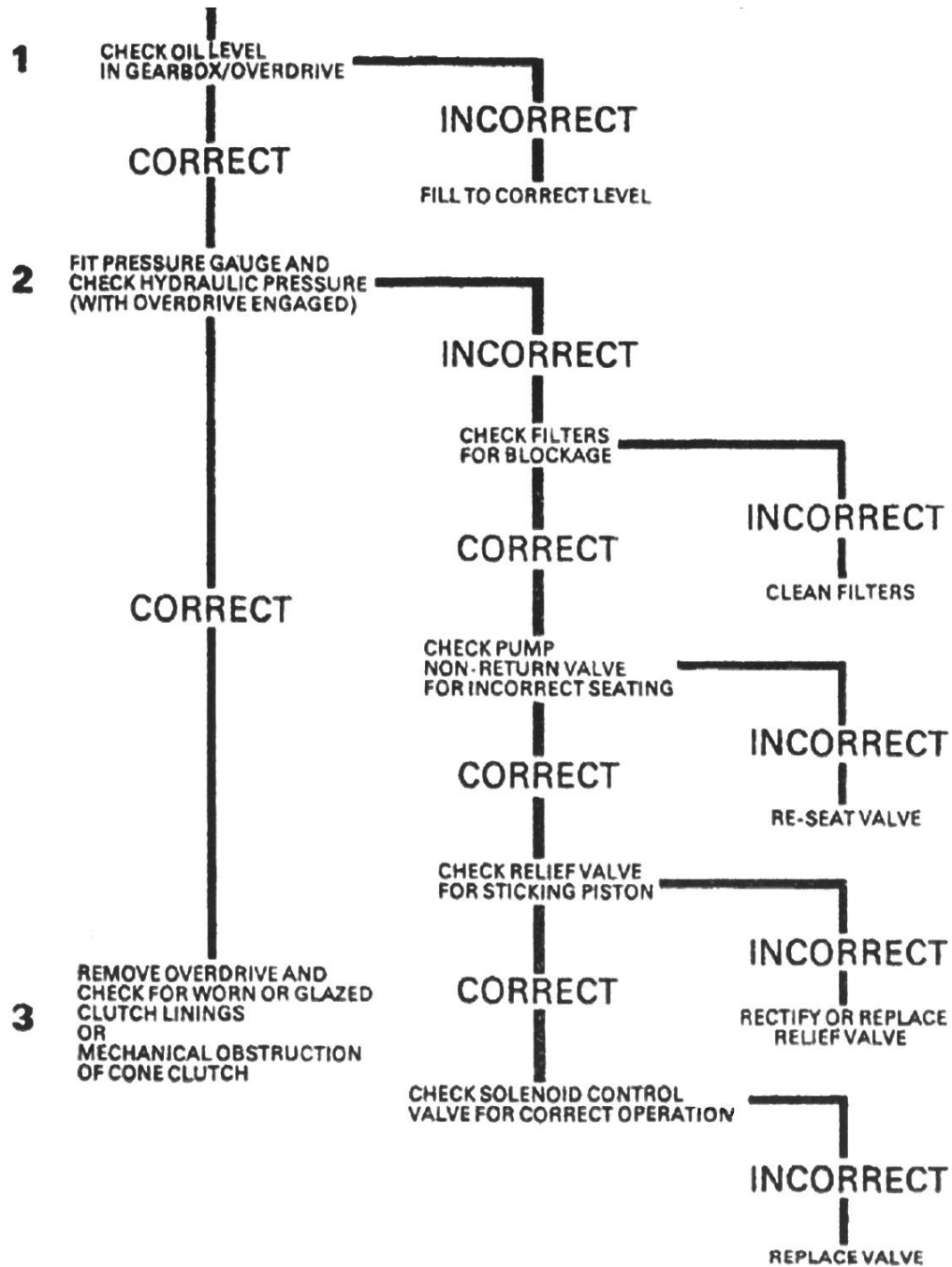


## B. Overdrive Does Not Disengage

[ This calls for immediate attention. Do not reverse car otherwise extensive damage may be caused ]



## C. Overdrive Slips When Engaging



## D. Overdrive Disengagement Slow and/or Free-wheeling on Overrun

